

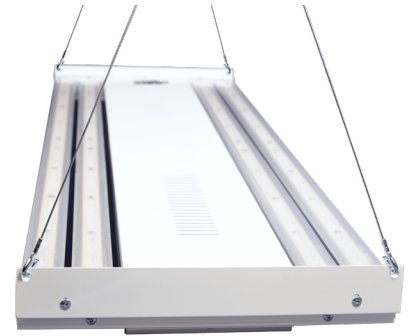


Catalog #: \_\_\_\_\_ Project: \_\_\_\_\_ Type: \_\_\_\_\_

Prepared By: \_\_\_\_\_ Date: \_\_\_\_\_

# Zone™ Indirect Sports Light (ZNIA)

## High Output Indirect Indoor Luminaire



OVERVIEW	
Lumen Package (lm)	55,000 - 75,000
CCT (K)	4000, 5000
Wattage Range (W)	422 - 568
Efficacy Range (LPW)	120 - 137
Weight lbs (kg)	25.6/29.8 (11.6/13.4)

### QUICK LINKS

## FEATURES & SPECIFICATIONS

### Construction

- Constructed of 22 gauge die-formed steel with a post-paint polyester coat finish and rigid aluminum heat sinks
- Access panel provides hinged access to wiring and driver connections
- Housing is treated with a phosphate rust inhibitor and painted with textured high-reflectance white (minimum 92%) powder coat.

### Optical System

- High transmission impact-resistant Clear Acrylic lenses
- Available in 4000K, 5000K color temperatures
- Minimum CRI of 80
- Specifically designed for glare-free lighting in sports venues.

### Electrical

- High-performance programmable driver features overvoltage, under voltage, short-circuit and over temperature protection. Custom lumen and wattage packages available.
- 0-10V dimming (10%-100%) standard
- Standard Universal Voltage (120-277 VAC) Input 50/60 or optional High Voltage (347 VAC)
- L70 Calculated Life: >100K hours
- Total Harmonic Distortion: <20%
- Operating Temperature -40C to +55C (-40F to +131F)
- Power factor: >0.95.

### Installation

- Mounting options include Hook Cable Hangers (HCH10) and optional Single Hub/Chain Mount (SHC)
- Standard cord is a 15ft 16/5 SOOW wire.

### Warranty

- LSI luminaires carry a 5-year limited warranty. Refer to <https://www.lsicorp.com/resources/terms-conditions-warranty/> for more information.

### Listings

- Listed to UL 1598 and UL 8750
- RoHS Compliant
- Suitable for damp locations
- Meet Buy American Act Requirements
- DesignLights Consortium® (DLC) Premium qualified product. Not all versions of this product may be DLC Premium qualified. Please check the DLC Qualified Products List at [www.designlights.org/QPL](http://www.designlights.org/QPL) to confirm which versions are qualified.

# Zone™ Indirect Sports Light (ZNIA)

Type : \_\_\_\_\_

 **Have questions?** Call us at (800) 436-7800

## ORDERING GUIDE

TYPICAL ORDER EXAMPLE: ZNIA 2LEDSE 55L CA W UNV 40								
Prefix	Light Source	Lumen Package	Lens Type	Distribution	Voltage	Color Temperature	EM Options	Controls
ZNIA - Zone Indirect	2LEDSE - Standard Efficiency	55L - 55,000 Lumens 75L - 75,000 Lumens Custom Lumens <sup>4</sup>	CA - Clear Acrylic	W - Wide	UNV - 120-277V HV - 347-480V	50 - 5000K 40 - 4000K	Standard - No EM EM10 - Emergency Backup 10W <sup>3</sup>	Standard - No Controls ALSC - AirLink Synapse Control



**Need more information?**  
[Click here for our glossary.](#)

**Have additional questions?**  
Call us at (800) 436-7800



## ACCESSORY ORDERING INFORMATION

Part Number	Description
731039	SHC - Single Hub/Chain Mount
731040	MCH10 - 10' Hook Cable Hanger (Pair)
731041	Retrofit Panel Kit - RECU Richmond to SCM

## PERFORMANCE

Delivered Lumens								
Lumen Package	Light Source	Distribution	CRI	4000K CCT		5000K CCT		Wattage
				Delivered Lumens	Efficacy	Delivered Lumens	Efficacy	
55L	2LEDSE	CA	80	57552	135	57552	135	428
75L	2LEDSE	CA	80	76755	140	76755	140	550

1 - Fixture comes standard with 15' cord 16/5 dimming

2 - Fixture comes standard with 0-10V dimming

3 - EM10 only available with 55L unit

4 - Custom lumen and wattages available consult factory. Values are within industry standard tolerances and not DLC listed.



# Zone™ Indirect Sports Light (ZNIA)

Type: \_\_\_\_\_

 Have questions? Call us at (800) 436-7800

## PHOTOMETRICS

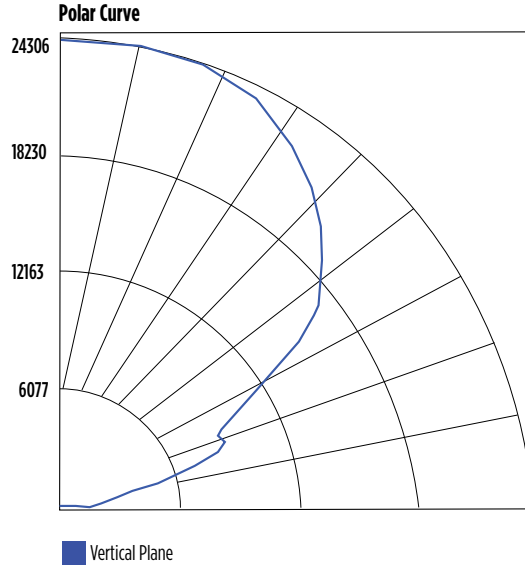
Luminaire photometry has been conducted by a NVLAP accredited testing laboratory in accordance with IESNA LM-79-08. As specified by IESNA LM-79-08 the entire luminaire is tested as the source resulting in a luminaire efficiency of 100%.

See the individual product page on <https://www.lsicorp.com/> for detailed photometric data.

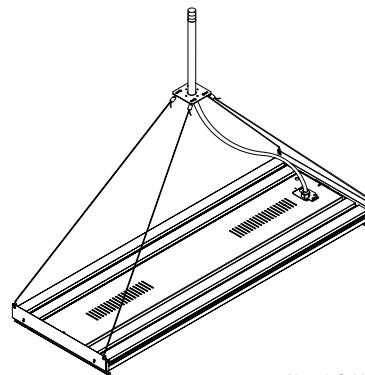
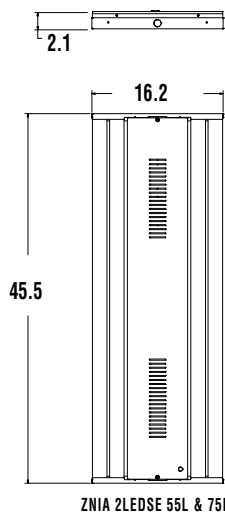
### ZNIA 2LEDSE 75L CA W 40

Luminaire Data	
Wide Distribution	
Description	4,000 Kelvin, 80 CRI
Delivered Lumens	76,753
Watts	550
LPW	140

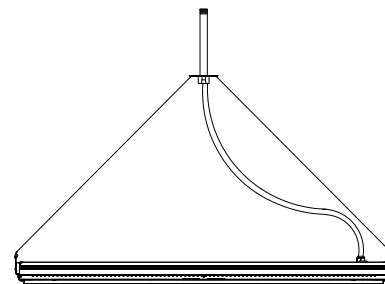
Zonal Lumen Summary		
Zone	Lumens	% Luminaire
0-90	0	0
90-110	6,536	8.5%
110-150	50,397	65.7%
150-180	19,819	25.8%
<b>Total Flux</b>	<b>76,753</b>	<b>100.0%</b>



## PRODUCT DIMENSIONS



Aircraft Cable Hub Kit (ACH)



SHIPPING WEIGHTS	
ZNIA 2LEDSE 55L	25.6 lbs
ZNIA 2LEDSE 75L	29.8 lbs