



**IES FLOOD REPORT**  
**PHOTOMETRIC FILENAME : XIG-B-LED-19-350-3570-UE-NFL25.IES**

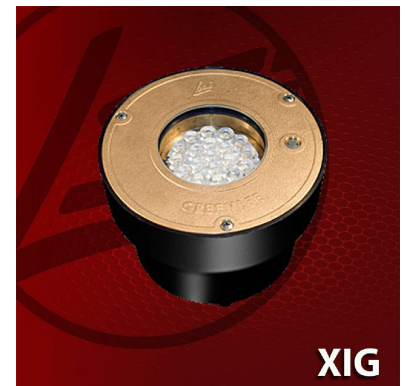
**DESCRIPTIVE INFORMATION (From Photometric File)**

IESNA:LM-63-2002  
[TEST] LED-13851  
[TESTLAB] LSI INDUSTRIES, INC.  
[TESTDATE] 01/20/23  
[ISSUEDATE] 03/15/23  
[MANUFAC] LSI INDUSTRIES, INC.  
[LUMCAT] XIG-B-LED-19-350-3570-UE-NFL25  
[TEST PROCEDURE] IESNA LM-79-19  
[ ABSOLUTE] NOTE: DATA SHOWN IS ABSOLUTE FOR THE SAMPLE PROVIDED.  
[ FACTORED] SCALED FROM ORIGINAL TEST DATA  
[ SEARCH\_SOURCETYPE] LED  
[ SEARCH\_APPLICATION] Outdoor  
[ SEARCH\_COLORTEMP] 3500

Note: Candela values converted from Type-C to Type-B

**CHARACTERISTICS**

NEMA Type	3 H x 3 V
Maximum Candela	11191
Maximum Candela Angle	0H 0V
Horizontal Beam Angle (50%)	18.0
Vertical Beam Angle (50%)	19.2
Horizontal Field Angle (10%)	41.1
Vertical Field Angle (10%)	42.5
Lumens Per Lamp	N.A. (absolute)
Total Lamp Lumens	N.A. (absolute)
Beam Lumens	668
Beam Efficiency	N.A.
Field Lumens	1475
Field Efficiency	N.A.
Spill Lumens	671
Luminaire Lumens	2146
Total Efficiency	N.A.
Total Luminaire Watts	19.1
Ballast Factor	1.00



**IES FLOOD REPORT**  
**PHOTOMETRIC FILENAME : XIG-B-LED-19-350-3570-UE-NFL25.IES**

**AXIAL CANDELA**

DEG.	HOR.	DEG.	VERT.
90	0	90	0
85	0	85	1
75	8	75	8
65	28	65	29
55	69	55	70
47.5	105	47.5	108
42.5	141	42.5	141
37.5	210	37.5	209
33	316	33	314
29	448	29	454
25.5	618	25.5	645
22.5	852	22.5	923
19.5	1265	19.5	1398
17	1774	17	1984
15	2329	15	2625
13	3169	13	3462
11	4238	11	4585
9	5600	9	6010
7	7269	7	7676
5	9204	5	9446
3	10692	3	10657
1	11140	1	11099
0	11191	0	11191
-1	11140	-1	11099
-3	10692	-3	10657
-5	9204	-5	9446
-7	7269	-7	7676
-9	5600	-9	6010
-11	4238	-11	4585
-13	3169	-13	3462
-15	2329	-15	2625
-17	1774	-17	1984
-19.5	1265	-19.5	1398
-22.5	852	-22.5	923
-25.5	618	-25.5	645
-29	448	-29	454
-33	316	-33	314
-37.5	210	-37.5	209
-42.5	141	-42.5	141
-47.5	105	-47.5	108
-55	69	-55	70
-65	28	-65	29
-75	8	-75	8
-85	0	-85	1
-90	0	-90	0

**IES FLOOD REPORT**  
**PHOTOMETRIC FILENAME : XIG-B-LED-19-350-3570-UE-NFL25.IES**

**CANDELA TABULATION**

Maximum Candela = 11191

Beam Edge = 5595.5 Cd (50% of Max.)

Field Edge = 1119.1 Cd (10% of Max.)

\* Indicates Values Inside Field Edge

<b>Vert. Angles</b>	<b>Horizontal Angles</b>									
	<b><u>-90.0</u></b>	<b><u>-85.0</u></b>	<b><u>-75.0</u></b>	<b><u>-65.0</u></b>	<b><u>-55.0</u></b>	<b><u>-47.5</u></b>	<b><u>-42.5</u></b>	<b><u>-37.5</u></b>	<b><u>-33.0</u></b>	<b><u>-29.0</u></b>
<b>90.0</b>	0	0	0	0	0	0	0	0	0	0
<b>85.0</b>	0	0	0	0	0	0	0	1	1	1
<b>75.0</b>	0	0	1	1	1	2	3	4	4	5
<b>65.0</b>	0	0	1	2	7	11	13	16	18	20
<b>55.0</b>	0	0	1	7	15	23	28	34	40	45
<b>47.5</b>	0	0	2	11	23	35	44	56	67	76
<b>42.5</b>	0	0	3	13	28	45	59	74	86	96
<b>37.5</b>	0	0	4	16	34	57	74	90	102	114
<b>33.0</b>	0	0	4	18	40	67	85	102	119	138
<b>29.0</b>	0	0	5	20	45	76	95	115	138	169
<b>25.5</b>	0	0	6	22	50	83	103	128	161	206
<b>22.5</b>	0	0	6	23	54	88	109	141	187	244
<b>19.5</b>	0	0	7	24	57	93	116	156	216	288
<b>17.0</b>	0	0	7	25	60	96	120	166	242	326
<b>15.0</b>	0	0	7	26	62	98	124	173	257	356
<b>13.0</b>	0	0	7	26	64	100	128	182	270	376
<b>11.0</b>	0	0	8	27	66	101	131	190	282	393
<b>9.0</b>	0	0	8	27	67	102	134	197	293	408
<b>7.0</b>	0	0	8	28	68	103	136	202	302	423
<b>5.0</b>	0	0	8	28	69	104	138	205	309	436
<b>3.0</b>	0	0	8	28	69	105	140	208	313	444
<b>1.0</b>	0	0	8	28	69	105	141	210	316	448
<b>0.0</b>	0	0	8	28	69	105	141	210	316	448
<b>-1.0</b>	0	0	8	28	69	105	141	210	316	448
<b>-3.0</b>	0	0	8	28	69	105	140	208	313	444
<b>-5.0</b>	0	0	8	28	69	104	138	205	309	436
<b>-7.0</b>	0	0	8	28	68	103	136	202	302	423
<b>-9.0</b>	0	0	8	27	67	102	134	197	293	408
<b>-11.0</b>	0	0	8	27	66	101	131	190	282	393
<b>-13.0</b>	0	0	7	26	64	100	128	182	270	376
<b>-15.0</b>	0	0	7	26	62	98	124	173	257	356
<b>-17.0</b>	0	0	7	25	60	96	120	166	242	326
<b>-19.5</b>	0	0	7	24	57	93	116	156	216	288
<b>-22.5</b>	0	0	6	23	54	88	109	141	187	244
<b>-25.5</b>	0	0	6	22	50	83	103	128	161	206
<b>-29.0</b>	0	0	5	20	45	76	95	115	138	169
<b>-33.0</b>	0	0	4	18	40	67	85	102	119	138
<b>-37.5</b>	0	0	4	16	34	57	74	90	102	114
<b>-42.5</b>	0	0	3	13	28	45	59	74	86	96
<b>-47.5</b>	0	0	2	11	23	35	44	56	67	76
<b>-55.0</b>	0	0	1	7	15	23	28	34	40	45
<b>-65.0</b>	0	0	1	2	7	11	13	16	18	20
<b>-75.0</b>	0	0	1	1	1	2	3	4	4	5
<b>-85.0</b>	0	0	0	0	0	0	0	1	1	1
<b>-90.0</b>	0	0	0	0	0	0	0	0	0	0

**IES FLOOD REPORT**  
**PHOTOMETRIC FILENAME : XIG-B-LED-19-350-3570-UE-NFL25.IES**

**CANDELA TABULATION - (Cont.)**

Vert. Angles	Horizontal Angles									
	<u>-25.5</u>	<u>-22.5</u>	<u>-19.5</u>	<u>-17.0</u>	<u>-15.0</u>	<u>-13.0</u>	<u>-11.0</u>	<u>-9.0</u>	<u>-7.0</u>	<u>-5.0</u>
90.0	0	0	0	0	0	0	0	0	0	0
85.0	1	1	1	1	1	1	1	1	1	1
75.0	6	6	7	7	7	8	8	8	8	8
65.0	22	23	25	26	26	27	28	28	28	29
55.0	50	54	57	60	62	64	66	67	68	69
47.5	84	89	94	97	99	101	103	105	106	107
42.5	103	110	116	121	125	129	133	136	138	139
37.5	127	139	152	163	170	179	187	194	199	203
33.0	160	182	205	227	244	258	273	286	297	305
29.0	203	240	278	311	336	362	384	404	423	438
25.5	255	303	356	401	441	480	516	556	592	619
22.5	305	366	436	500	561	625	685	762	828	880
19.5	360	437	528	631	727	837	950	1090	1204 *	1291 *
17.0	409	499	624	771	901	1084	1262 *	1474 *	1661 *	1805 *
15.0	449	556	708	885	1091	1310 *	1586 *	1840 *	2135 *	2361 *
13.0	488	613	800	1039	1278 *	1592 *	1939 *	2325 *	2691 *	3054 *
11.0	517	664	890	1179 *	1510 *	1893 *	2343 *	2865 *	3401 *	3909 *
9.0	550	727	999	1350 *	1714 *	2222 *	2800 *	3418 *	4218 *	4939 *
7.0	579	780	1092	1499 *	1957 *	2523 *	3242 *	4127 *	5015 *	6177 *
5.0	602	820	1161 *	1607 *	2134 *	2813 *	3663 *	4740 *	6070 *	7354 *
3.0	616	845	1226 *	1708 *	2255 *	3002 *	3964 *	5206 *	6764 *	8489 *
1.0	620	856	1261 *	1768 *	2331 *	3118 *	4173 *	5518 *	7149 *	9153 *
0.0	618	852	1265 *	1774 *	2329 *	3169 *	4238 *	5600 *	7269 *	9204 *
-1.0	620	856	1261 *	1768 *	2331 *	3118 *	4173 *	5518 *	7149 *	9153 *
-3.0	616	845	1226 *	1708 *	2255 *	3002 *	3964 *	5206 *	6764 *	8489 *
-5.0	602	820	1161 *	1607 *	2134 *	2813 *	3663 *	4740 *	6070 *	7354 *
-7.0	579	780	1092	1499 *	1957 *	2523 *	3242 *	4127 *	5015 *	6177 *
-9.0	550	727	999	1350 *	1714 *	2222 *	2800 *	3418 *	4218 *	4939 *
-11.0	517	664	890	1179 *	1510 *	1893 *	2343 *	2865 *	3401 *	3909 *
-13.0	488	613	800	1039	1278 *	1592 *	1939 *	2325 *	2691 *	3054 *
-15.0	449	556	708	885	1091	1310 *	1586 *	1840 *	2135 *	2361 *
-17.0	409	499	624	771	901	1084	1262 *	1474 *	1661 *	1805 *
-19.5	360	437	528	631	727	837	950	1090	1204 *	1291 *
-22.5	305	366	436	500	561	625	685	762	828	880
-25.5	255	303	356	401	441	480	516	556	592	619
-29.0	203	240	278	311	336	362	384	404	423	438
-33.0	160	182	205	227	244	258	273	286	297	305
-37.5	127	139	152	163	170	179	187	194	199	203
-42.5	103	110	116	121	125	129	133	136	138	139
-47.5	84	89	94	97	99	101	103	105	106	107
-55.0	50	54	57	60	62	64	66	67	68	69
-65.0	22	23	25	26	26	27	28	28	28	29
-75.0	6	6	7	7	7	8	8	8	8	8
-85.0	1	1	1	1	1	1	1	1	1	1
-90.0	0	0	0	0	0	0	0	0	0	0

Vert. Angles	Horizontal Angles									
	<u>-3.0</u>	<u>-1.0</u>	<u>0.0</u>	<u>1.0</u>	<u>3.0</u>	<u>5.0</u>	<u>7.0</u>	<u>9.0</u>	<u>11.0</u>	<u>13.0</u>
90.0	0	0	0	0	0	0	0	0	0	0
85.0	1	1	1	1	1	1	1	1	1	1
75.0	8	8	8	8	8	8	8	8	8	8
65.0	29	29	29	29	29	29	28	28	28	27

**IES FLOOD REPORT**  
**PHOTOMETRIC FILENAME : XIG-B-LED-19-350-3570-UE-NFL25.IES**

**CANDELA TABULATION - (Cont.)**

55.0	70	70	70	70	70	69	68	67	66	64
47.5	108	108	108	108	108	107	106	105	103	101
42.5	141	141	141	141	141	139	138	136	133	129
37.5	205	208	209	208	205	203	199	194	187	179
33.0	311	314	314	314	311	305	297	286	273	258
29.0	448	453	454	453	448	438	423	404	384	362
25.5	638	645	645	645	638	619	592	556	516	480
22.5	915	930	923	930	915	880	828	762	685	625
19.5	1372 *	1408 *	1398 *	1408 *	1372 *	1291 *	1204 *	1090	950	837
17.0	1926 *	1990 *	1984 *	1990 *	1926 *	1805 *	1661 *	1474 *	1262 *	1084
15.0	2518 *	2612 *	2625 *	2612 *	2518 *	2361 *	2135 *	1840 *	1586 *	1310 *
13.0	3294 *	3426 *	3462 *	3426 *	3294 *	3054 *	2691 *	2325 *	1939 *	1592 *
11.0	4292 *	4487 *	4585 *	4487 *	4292 *	3909 *	3401 *	2865 *	2343 *	1893 *
9.0	5544 *	5871 *	6010 *	5871 *	5544 *	4939 *	4218 *	3418 *	2800 *	2222 *
7.0	7070 *	7521 *	7676 *	7521 *	7070 *	6177 *	5015 *	4127 *	3242 *	2523 *
5.0	8607 *	9334 *	9446 *	9334 *	8607 *	7354 *	6070 *	4740 *	3663 *	2813 *
3.0	9779 *	10572 *	10657 *	10572 *	9779 *	8489 *	6764 *	5206 *	3964 *	3002 *
1.0	10544 *	11081 *	11099 *	11081 *	10544 *	9153 *	7149 *	5518 *	4173 *	3118 *
0.0	10692 *	11140 *	11191 *	11140 *	10692 *	9204 *	7269 *	5600 *	4238 *	3169 *
-1.0	10544 *	11081 *	11099 *	11081 *	10544 *	9153 *	7149 *	5518 *	4173 *	3118 *
-3.0	9779 *	10572 *	10657 *	10572 *	9779 *	8489 *	6764 *	5206 *	3964 *	3002 *
-5.0	8607 *	9334 *	9446 *	9334 *	8607 *	7354 *	6070 *	4740 *	3663 *	2813 *
-7.0	7070 *	7521 *	7676 *	7521 *	7070 *	6177 *	5015 *	4127 *	3242 *	2523 *
-9.0	5544 *	5871 *	6010 *	5871 *	5544 *	4939 *	4218 *	3418 *	2800 *	2222 *
-11.0	4292 *	4487 *	4585 *	4487 *	4292 *	3909 *	3401 *	2865 *	2343 *	1893 *
-13.0	3294 *	3426 *	3462 *	3426 *	3294 *	3054 *	2691 *	2325 *	1939 *	1592 *
-15.0	2518 *	2612 *	2625 *	2612 *	2518 *	2361 *	2135 *	1840 *	1586 *	1310 *
-17.0	1926 *	1990 *	1984 *	1990 *	1926 *	1805 *	1661 *	1474 *	1262 *	1084
-19.5	1372 *	1408 *	1398 *	1408 *	1372 *	1291 *	1204 *	1090	950	837
-22.5	915	930	923	930	915	880	828	762	685	625
-25.5	638	645	645	645	638	619	592	556	516	480
-29.0	448	453	454	453	448	438	423	404	384	362
-33.0	311	314	314	314	311	305	297	286	273	258
-37.5	205	208	209	208	205	203	199	194	187	179
-42.5	141	141	141	141	141	139	138	136	133	129
-47.5	108	108	108	108	108	107	106	105	103	101
-55.0	70	70	70	70	70	69	68	67	66	64
-65.0	29	29	29	29	29	29	28	28	28	27
-75.0	8	8	8	8	8	8	8	8	8	8
-85.0	1	1	1	1	1	1	1	1	1	1
-90.0	0	0	0	0	0	0	0	0	0	0

**Vert. Horizontal Angles**  
**Angles**

	<u>15.0</u>	<u>17.0</u>	<u>19.5</u>	<u>22.5</u>	<u>25.5</u>	<u>29.0</u>	<u>33.0</u>	<u>37.5</u>	<u>42.5</u>	<u>47.5</u>
90.0	0	0	0	0	0	0	0	0	0	0
85.0	1	1	1	1	1	1	1	1	0	0
75.0	7	7	7	6	6	5	4	4	3	2
65.0	26	26	25	23	22	20	18	16	13	11
55.0	62	60	57	54	50	45	40	34	28	23
47.5	99	97	94	89	84	76	67	56	44	35
42.5	125	121	116	110	103	96	86	74	59	45
37.5	170	163	152	139	127	114	102	90	74	57
33.0	244	227	205	182	160	138	119	102	85	67
29.0	336	311	278	240	203	169	138	115	95	76
25.5	441	401	356	303	255	206	161	128	103	83

**IES FLOOD REPORT**  
**PHOTOMETRIC FILENAME : XIG-B-LED-19-350-3570-UE-NFL25.IES**

**CANDELA TABULATION - (Cont.)**

22.5	561	500	436	366	305	244	187	141	109	88
19.5	727	631	528	437	360	288	216	156	116	93
17.0	901	771	624	499	409	326	242	166	120	96
15.0	1091	885	708	556	449	356	257	173	124	98
13.0	1278 *	1039	800	613	488	376	270	182	128	100
11.0	1510 *	1179 *	890	664	517	393	282	190	131	101
9.0	1714 *	1350 *	999	727	550	408	293	197	134	102
7.0	1957 *	1499 *	1092	780	579	423	302	202	136	103
5.0	2134 *	1607 *	1161 *	820	602	436	309	205	138	104
3.0	2255 *	1708 *	1226 *	845	616	444	313	208	140	105
1.0	2331 *	1768 *	1261 *	856	620	448	316	210	141	105
0.0	2329 *	1774 *	1265 *	852	618	448	316	210	141	105
-1.0	2331 *	1768 *	1261 *	856	620	448	316	210	141	105
-3.0	2255 *	1708 *	1226 *	845	616	444	313	208	140	105
-5.0	2134 *	1607 *	1161 *	820	602	436	309	205	138	104
-7.0	1957 *	1499 *	1092	780	579	423	302	202	136	103
-9.0	1714 *	1350 *	999	727	550	408	293	197	134	102
-11.0	1510 *	1179 *	890	664	517	393	282	190	131	101
-13.0	1278 *	1039	800	613	488	376	270	182	128	100
-15.0	1091	885	708	556	449	356	257	173	124	98
-17.0	901	771	624	499	409	326	242	166	120	96
-19.5	727	631	528	437	360	288	216	156	116	93
-22.5	561	500	436	366	305	244	187	141	109	88
-25.5	441	401	356	303	255	206	161	128	103	83
-29.0	336	311	278	240	203	169	138	115	95	76
-33.0	244	227	205	182	160	138	119	102	85	67
-37.5	170	163	152	139	127	114	102	90	74	57
-42.5	125	121	116	110	103	96	86	74	59	45
-47.5	99	97	94	89	84	76	67	56	44	35
-55.0	62	60	57	54	50	45	40	34	28	23
-65.0	26	26	25	23	22	20	18	16	13	11
-75.0	7	7	7	6	6	5	4	4	3	2
-85.0	1	1	1	1	1	1	1	1	0	0
-90.0	0	0	0	0	0	0	0	0	0	0

Vert. Angles	Horizontal Angles				
	<u>55.0</u>	<u>65.0</u>	<u>75.0</u>	<u>85.0</u>	<u>90.0</u>
90.0	0	0	0	0	0
85.0	0	0	0	0	0
75.0	1	1	1	0	0
65.0	7	2	1	0	0
55.0	15	7	1	0	0
47.5	23	11	2	0	0
42.5	28	13	3	0	0
37.5	34	16	4	0	0
33.0	40	18	4	0	0
29.0	45	20	5	0	0
25.5	50	22	6	0	0
22.5	54	23	6	0	0
19.5	57	24	7	0	0
17.0	60	25	7	0	0
15.0	62	26	7	0	0
13.0	64	26	7	0	0
11.0	66	27	8	0	0
9.0	67	27	8	0	0

**IES FLOOD REPORT**  
**PHOTOMETRIC FILENAME : XIG-B-LED-19-350-3570-UE-NFL25.IES**

**CANDELA TABULATION - (Cont.)**

<b>7.0</b>	68	28	8	0	0
<b>5.0</b>	69	28	8	0	0
<b>3.0</b>	69	28	8	0	0
<b>1.0</b>	69	28	8	0	0
<b>0.0</b>	69	28	8	0	0
<b>-1.0</b>	69	28	8	0	0
<b>-3.0</b>	69	28	8	0	0
<b>-5.0</b>	69	28	8	0	0
<b>-7.0</b>	68	28	8	0	0
<b>-9.0</b>	67	27	8	0	0
<b>-11.0</b>	66	27	8	0	0
<b>-13.0</b>	64	26	7	0	0
<b>-15.0</b>	62	26	7	0	0
<b>-17.0</b>	60	25	7	0	0
<b>-19.5</b>	57	24	7	0	0
<b>-22.5</b>	54	23	6	0	0
<b>-25.5</b>	50	22	6	0	0
<b>-29.0</b>	45	20	5	0	0
<b>-33.0</b>	40	18	4	0	0
<b>-37.5</b>	34	16	4	0	0
<b>-42.5</b>	28	13	3	0	0
<b>-47.5</b>	23	11	2	0	0
<b>-55.0</b>	15	7	1	0	0
<b>-65.0</b>	7	2	1	0	0
<b>-75.0</b>	1	1	1	0	0
<b>-85.0</b>	0	0	0	0	0
<b>-90.0</b>	0	0	0	0	0

**IES FLOOD REPORT**  
**PHOTOMETRIC FILENAME : XIG-B-LED-19-350-3570-UE-NFL25.IES**

**LUMEN TABULATION**

Average Of Right And Left Sides

Total Luminaire Lumens (one side of beam only) = 1072.9

Total Field Lumens (one side of beam only) = 737.31

\* Indicates Values Inside Field Edge

Vert. Angles	Horizontal Angles									
	<u>0</u>	<u>1</u>	<u>3</u>	<u>5</u>	<u>7</u>	<u>9</u>	<u>11</u>	<u>13</u>	<u>15</u>	<u>17</u>
90										
85	0.00	0.00	0.00	0.00	0.00	0.00	0.00	0.00	0.00	0.00
75	0.01	0.03	0.03	0.03	0.03	0.03	0.03	0.03	0.02	0.03
65	0.06	0.11	0.11	0.11	0.11	0.11	0.11	0.10	0.10	0.12
55	0.15	0.30	0.30	0.29	0.29	0.28	0.28	0.26	0.25	0.30
47.5	0.20	0.41	0.40	0.40	0.39	0.38	0.37	0.36	0.35	0.42
42.5	0.19	0.38	0.38	0.37	0.37	0.36	0.35	0.34	0.32	0.39
37.5	0.27	0.53	0.52	0.51	0.50	0.49	0.47	0.45	0.42	0.50
33	0.36	0.71	0.70	0.68	0.66	0.63	0.60	0.57	0.53	0.61
29	0.47	0.93	0.91	0.89	0.85	0.81	0.76	0.71	0.65	0.74
25.5	0.59	1.16	1.14	1.10	1.04	0.98	0.91	0.84	0.76	0.85
22.5	0.72	1.43	1.39	1.33	1.24	1.13	1.03	0.93	0.84	0.92
19.5	1.06 *	2.11 *	2.03	1.91	1.76	1.57	1.38	1.22	1.06	1.14
17	1.29 *	2.55 *	2.43 *	2.26 *	2.05 *	1.79 *	1.54	1.31	1.11	1.15
15	1.40 *	2.75 *	2.62 *	2.41 *	2.14 *	1.85 *	1.56 *	1.30	1.07	1.08
13	1.85 *	3.61 *	3.41 *	3.10 *	2.71 *	2.31 *	1.91 *	1.56 *	1.26	1.24
11	2.43 *	4.72 *	4.42 *	3.95 *	3.40 *	2.84 *	2.31 *	1.85 *	1.47 *	1.41
9	3.19 *	6.15 *	5.68 *	4.99 *	4.19 *	3.43 *	2.76 *	2.17 *	1.68 *	1.60
7	4.12 *	7.92 *	7.21 *	6.16 *	5.06 *	4.08 *	3.21 *	2.49 *	1.91 *	1.79 *
5	5.17 *	9.90 *	8.88 *	7.46 *	6.02 *	4.73 *	3.65 *	2.79 *	2.11 *	1.94 *
3	6.09 *	11.66 *	10.40 *	8.69 *	6.87 *	5.27 *	4.00 *	3.02 *	2.26 *	2.06 *
1	6.61 *	12.78 *	11.54 *	9.56 *	7.43 *	5.66 *	4.25 *	3.16 *	2.36 *	2.16 *
0	3.39 *	6.61 *	6.02 *	4.96 *	3.85 *	2.93 *	2.19 *	1.62 *	1.20 *	1.10 *
-1	3.39 *	6.61 *	6.02 *	4.96 *	3.85 *	2.93 *	2.19 *	1.62 *	1.20 *	1.10 *
	6.61 *	12.78 *	11.54 *	9.56 *	7.43 *	5.66 *	4.25 *	3.16 *	2.36 *	2.16 *



**IES FLOOD REPORT**  
**PHOTOMETRIC FILENAME : XIG-B-LED-19-350-3570-UE-NFL25.IES**

**LUMENS TABULATION - (Cont.)**

<b>-3</b>	6.09 *	11.66 *	10.40 *	8.69 *	6.87 *	5.27 *	4.00 *	3.02 *	2.26 *	2.06 *
<b>-5</b>	5.17 *	9.90 *	8.88 *	7.46 *	6.02 *	4.73 *	3.65 *	2.79 *	2.11 *	1.94 *
<b>-7</b>	4.12 *	7.92 *	7.21 *	6.16 *	5.06 *	4.08 *	3.21 *	2.49 *	1.91 *	1.79 *
<b>-9</b>	3.19 *	6.15 *	5.68 *	4.99 *	4.19 *	3.43 *	2.76 *	2.17 *	1.68 *	1.60
<b>-11</b>	2.43 *	4.72 *	4.42 *	3.95 *	3.40 *	2.84 *	2.31 *	1.85 *	1.47 *	1.41
<b>-13</b>	1.85 *	3.61 *	3.41 *	3.10 *	2.71 *	2.31 *	1.91 *	1.56 *	1.26	1.24
<b>-15</b>	1.40 *	2.75 *	2.62 *	2.41 *	2.14 *	1.85 *	1.56 *	1.30	1.07	1.08
<b>-17</b>	1.29 *	2.55 *	2.43 *	2.26 *	2.05 *	1.79 *	1.54	1.31	1.11	1.15
<b>-19.5</b>	1.06 *	2.11 *	2.03	1.91	1.76	1.57	1.38	1.22	1.06	1.14
<b>-22.5</b>	0.72	1.43	1.39	1.33	1.24	1.13	1.03	0.93	0.84	0.92
<b>-25.5</b>	0.59	1.16	1.14	1.10	1.04	0.98	0.91	0.84	0.76	0.85
<b>-29</b>	0.47	0.93	0.91	0.89	0.85	0.81	0.76	0.71	0.65	0.74
<b>-33</b>	0.36	0.71	0.70	0.68	0.66	0.63	0.60	0.57	0.53	0.61
<b>-37.5</b>	0.27	0.53	0.52	0.51	0.50	0.49	0.47	0.45	0.42	0.50
<b>-42.5</b>	0.19	0.38	0.38	0.37	0.37	0.36	0.35	0.34	0.32	0.39
<b>-47.5</b>	0.20	0.41	0.40	0.40	0.39	0.38	0.37	0.36	0.35	0.42
<b>-55</b>	0.15	0.30	0.30	0.29	0.29	0.28	0.28	0.26	0.25	0.30
<b>-65</b>	0.06	0.11	0.11	0.11	0.11	0.11	0.11	0.10	0.10	0.12
<b>-75</b>	0.01	0.03	0.03	0.03	0.03	0.03	0.03	0.03	0.02	0.03
<b>-85</b>	0.00	0.00	0.00	0.00	0.00	0.00	0.00	0.00	0.00	0.00
<b>-90</b>	0.00	0.00	0.00	0.00	0.00	0.00	0.00	0.00	0.00	0.00
<b>Total</b>	79.26	153.49	141.02	122.34	101.94	83.30	67.35	54.12	43.47	43.07

**Vert. Horizontal Angles**

<b>Angles</b>	<b>19.5</b>	<b>22.5</b>	<b>25.5</b>	<b>29</b>	<b>33</b>	<b>37.5</b>	<b>42.5</b>	<b>47.5</b>	<b>55</b>	<b>65</b>
<b>90</b>	0.00	0.00	0.00	0.00	0.00	0.00	0.00	0.00	0.00	0.00
<b>85</b>	0.03	0.03	0.03	0.03	0.03	0.02	0.01	0.01	0.01	0.01
<b>75</b>	0.13	0.12	0.13	0.12	0.12	0.10	0.08	0.08	0.04	0.01
<b>65</b>	0.34	0.31	0.32	0.32	0.30	0.27	0.20	0.20	0.12	0.03
<b>55</b>	0.47	0.43	0.45	0.45	0.41	0.35	0.26	0.26	0.16	0.04

**IES FLOOD REPORT**  
**PHOTOMETRIC FILENAME : XIG-B-LED-19-350-3570-UE-NFL25.IES**

**LUMENS TABULATION - (Cont.)**

<b>47.5</b>										
	0.44	0.40	0.43	0.42	0.40	0.34	0.25	0.23	0.14	0.04
<b>42.5</b>	0.55	0.50	0.52	0.52	0.49	0.43	0.32	0.29	0.17	0.05
<b>37.5</b>	0.65	0.57	0.57	0.56	0.52	0.46	0.34	0.32	0.18	0.05
<b>33</b>	0.77	0.66	0.63	0.59	0.53	0.46	0.35	0.33	0.19	0.05
<b>29</b>	0.88	0.73	0.69	0.62	0.53	0.45	0.34	0.32	0.18	0.05
<b>25.5</b>	0.93	0.77	0.72	0.62	0.52	0.42	0.31	0.29	0.17	0.04
<b>22.5</b>	1.13	0.92	0.85	0.73	0.59	0.46	0.33	0.31	0.18	0.05
<b>19.5</b>	1.11	0.89	0.82	0.70	0.55	0.41	0.29	0.27	0.16	0.04
<b>17</b>	1.02	0.80	0.73	0.62	0.47	0.34	0.24	0.23	0.13	0.03
<b>15</b>	1.14	0.88	0.79	0.66	0.49	0.35	0.24	0.23	0.14	0.03
<b>13</b>	1.27	0.95	0.84	0.69	0.52	0.37	0.25	0.24	0.14	0.04
<b>11</b>	1.40	1.03	0.89	0.72	0.54	0.38	0.25	0.24	0.14	0.04
<b>9</b>	1.53	1.10	0.93	0.74	0.56	0.39	0.26	0.24	0.14	0.04
<b>7</b>	1.64	1.16	0.97	0.77	0.57	0.40	0.26	0.25	0.15	0.04
<b>5</b>	1.73	1.20	0.99	0.78	0.58	0.40	0.26	0.25	0.15	0.04
<b>3</b>	1.79	1.23	1.01	0.79	0.59	0.41	0.26	0.25	0.15	0.04
<b>1</b>	0.90	0.61	0.51	0.40	0.29	0.20	0.13	0.12	0.07	0.02
<b>0</b>	0.90	0.61	0.51	0.40	0.29	0.20	0.13	0.12	0.07	0.02
<b>-1</b>	1.79	1.23	1.01	0.79	0.59	0.41	0.26	0.25	0.15	0.04
<b>-3</b>	1.73	1.20	0.99	0.78	0.58	0.40	0.26	0.25	0.15	0.04
<b>-5</b>	1.64	1.16	0.97	0.77	0.57	0.40	0.26	0.25	0.15	0.04
<b>-7</b>	1.53	1.10	0.93	0.74	0.56	0.39	0.26	0.24	0.14	0.04
<b>-9</b>	1.40	1.03	0.89	0.72	0.54	0.38	0.25	0.24	0.14	0.04
<b>-11</b>	1.27	0.95	0.84	0.69	0.52	0.37	0.25	0.24	0.14	0.04
<b>-13</b>	1.14	0.88	0.79	0.66	0.49	0.35	0.24	0.23	0.14	0.03
<b>-15</b>	1.02	0.80	0.73	0.62	0.47	0.34	0.24	0.23	0.13	0.03
<b>-17</b>	1.11	0.89	0.82	0.70	0.55	0.41	0.29	0.27	0.16	0.04
<b>-19.5</b>	1.13	0.92	0.85	0.73	0.59	0.46	0.33	0.31	0.18	0.05

**IES FLOOD REPORT**  
**PHOTOMETRIC FILENAME : XIG-B-LED-19-350-3570-UE-NFL25.IES**

**LUMENS TABULATION - (Cont.)**

<b>-22.5</b>	0.93	0.77	0.72	0.62	0.52	0.42	0.31	0.29	0.17	0.04
<b>-25.5</b>	0.88	0.73	0.69	0.62	0.53	0.45	0.34	0.32	0.18	0.05
<b>-29</b>	0.77	0.66	0.63	0.59	0.53	0.46	0.35	0.33	0.19	0.05
<b>-33</b>	0.65	0.57	0.57	0.56	0.52	0.46	0.34	0.32	0.18	0.05
<b>-37.5</b>	0.55	0.50	0.52	0.52	0.49	0.43	0.32	0.29	0.17	0.05
<b>-42.5</b>	0.44	0.40	0.43	0.42	0.40	0.34	0.25	0.23	0.14	0.04
<b>-47.5</b>	0.47	0.43	0.45	0.45	0.41	0.35	0.26	0.26	0.16	0.04
<b>-55</b>	0.34	0.31	0.32	0.32	0.30	0.27	0.20	0.20	0.12	0.03
<b>-65</b>	0.13	0.12	0.13	0.12	0.12	0.10	0.08	0.08	0.04	0.01
<b>-75</b>	0.03	0.03	0.03	0.03	0.03	0.02	0.01	0.01	0.01	0.01
<b>-85</b>	0.00	0.00	0.00	0.00	0.00	0.00	0.00	0.00	0.00	0.00
<b>-90</b>	0.00	0.00	0.00	0.00	0.00	0.00	0.00	0.00	0.00	0.00
<b>Total</b>	39.72	30.59	27.64	23.71	19.17	14.85	10.44	9.91	5.83	1.52

Vert. Angles	Horizontal Angles			
	<u>75</u>	<u>85</u>	<u>90</u>	<u>Total</u>
<b>90</b>	0.00	0.00	0.03	
<b>85</b>	0.00	0.00	0.46	
<b>75</b>	0.00	0.00	1.96	
<b>65</b>	0.00	0.00	5.13	
<b>55</b>	0.00	0.00	6.98	
<b>47.5</b>	0.00	0.00	6.52	
<b>42.5</b>	0.00	0.00	8.51	
<b>37.5</b>	0.00	0.00	10.29	
<b>33</b>	0.00	0.00	12.28	
<b>29</b>	0.01	0.00	14.15	
<b>25.5</b>	0.00	0.00	15.76	
<b>22.5</b>	0.01	0.00	20.80	
<b>19.5</b>	0.00	0.00	22.71	
<b>17</b>	0.00	0.00	22.79	

**IES FLOOD REPORT**  
**PHOTOMETRIC FILENAME : XIG-B-LED-19-350-3570-UE-NFL25.IES**

**LUMENS TABULATION - (Cont.)**

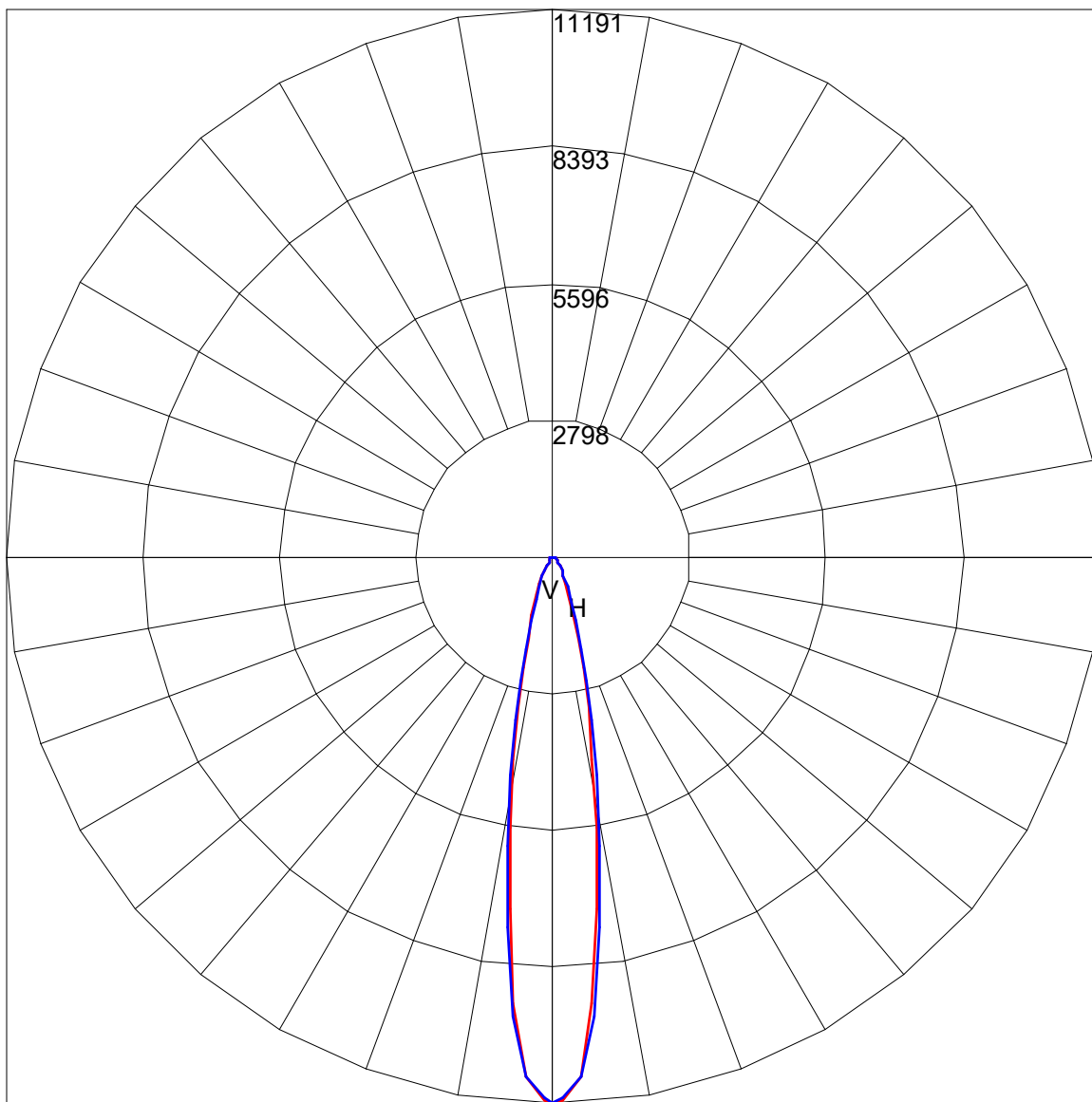
<b>15</b>	0.00	0.00	27.92
<b>13</b>	0.00	0.00	34.11
<b>11</b>	0.00	0.00	41.46
<b>9</b>	0.00	0.00	49.89
<b>7</b>	0.00	0.00	58.84
<b>5</b>	0.00	0.00	66.71
<b>3</b>	0.00	0.00	72.01
<b>1</b>	0.00	0.00	37.14
<b>0</b>	0.00	0.00	37.14
<b>-1</b>	0.00	0.00	72.01
<b>-3</b>	0.00	0.00	66.71
<b>-5</b>	0.00	0.00	58.84
<b>-7</b>	0.00	0.00	49.89
<b>-9</b>	0.00	0.00	41.46
<b>-11</b>	0.00	0.00	34.11
<b>-13</b>	0.00	0.00	27.92
<b>-15</b>	0.00	0.00	22.79
<b>-17</b>	0.00	0.00	22.71
<b>-19.5</b>	0.01	0.00	20.80
<b>-22.5</b>	0.00	0.00	15.76
<b>-25.5</b>	0.01	0.00	14.15
<b>-29</b>	0.00	0.00	12.28
<b>-33</b>	0.00	0.00	10.29
<b>-37.5</b>	0.00	0.00	8.51
<b>-42.5</b>	0.00	0.00	6.52
<b>-47.5</b>	0.00	0.00	6.98
<b>-55</b>	0.00	0.00	5.13
<b>-65</b>	0.00	0.00	1.96

**IES FLOOD REPORT**  
**PHOTOMETRIC FILENAME : XIG-B-LED-19-350-3570-UE-NFL25.IES**

**LUMENS TABULATION - (Cont.)**

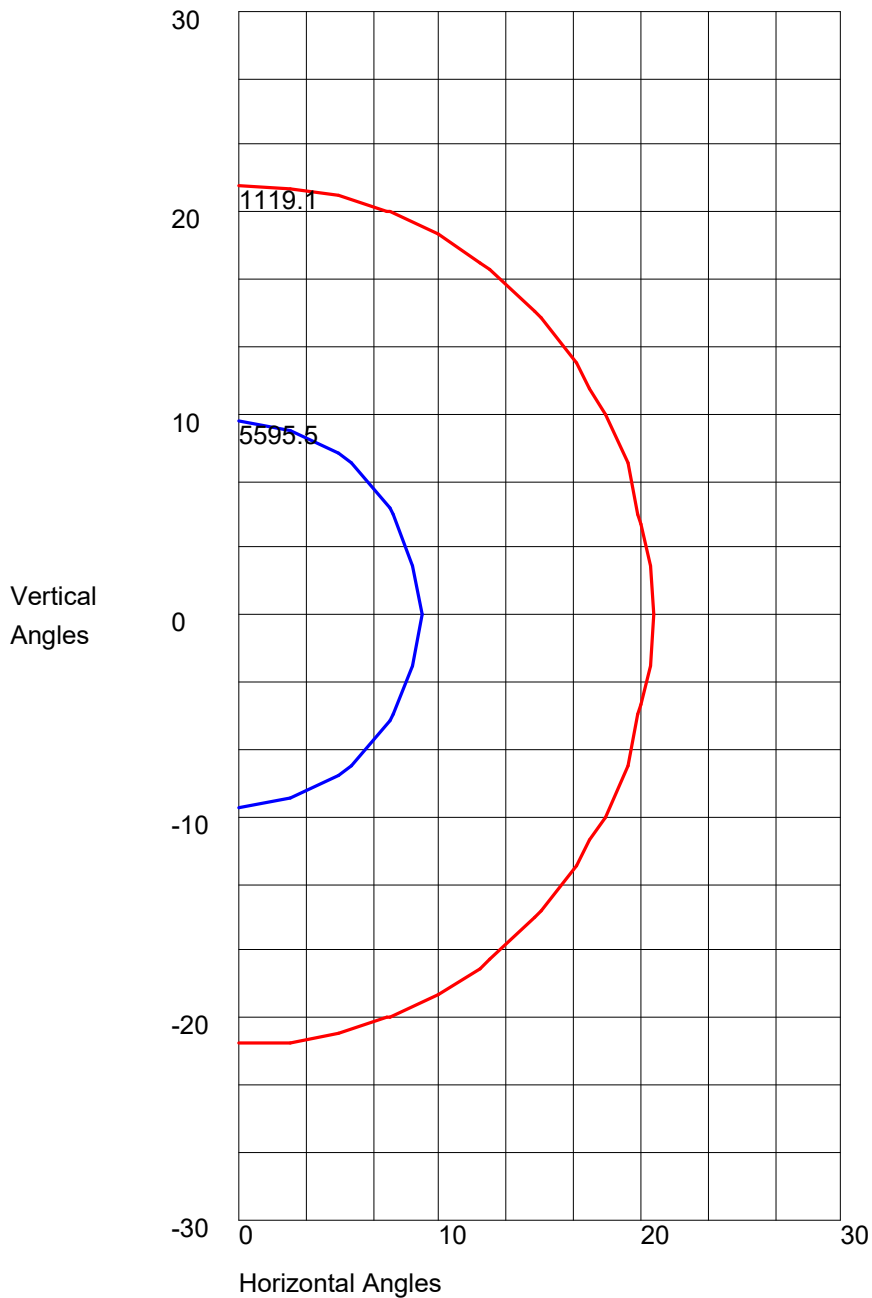
<b>-75</b>	0.00	0.00	0.46
<b>-85</b>	0.00	0.00	0.03
<b>-90</b>			
<b>Total</b>	0.16	0.00	1072.9

AXIAL CANDELA DISPLAY



Maximum Candela = 11191 Located At Horizontal Angle = 0, Vertical Angle = 0  
H - Horizontal Axial Candela  
V - Vertical Axial Candela

ISOCANDELA CURVES



Maximum Candela = 11191 Located At Horizontal Angle = 0, Vertical Angle = 0  
50% Maximum Candela = 5595.5  
10% Maximum Candela = 1119.1