

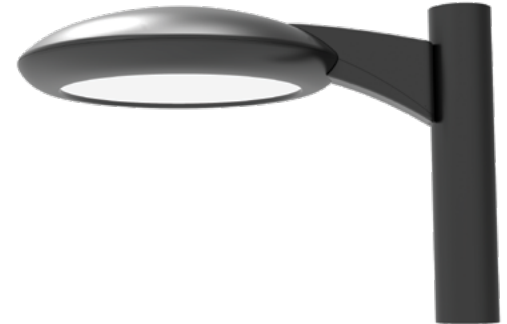


Catalog #: \_\_\_\_\_ Project: \_\_\_\_\_

Prepared By: \_\_\_\_\_ Date: \_\_\_\_\_ Type: \_\_\_\_\_

# Opulence Small Side Arm Mount (OPS SA)

## Outdoor Area Light

**IP66**

### OVERVIEW

Lumen Output Range	3,000 - 14,000
Wattage	20 - 100
Efficacy Range (LPW)	128 - 165
Fixture Weight lbs (kg)	16.5 (7.5)

### QUICK LINKS

[Ordering Guide](#)[Performance](#)[Photometrics](#)[Dimensions](#)

## FEATURES & SPECIFICATIONS

### Construction

- Rugged die-cast aluminum housing.
- Fixtures are finished with LSI's DuraGrip® polyester powder coat finishing process. The DuraGrip finish withstands extreme weather changes without cracking or peeling. Other standard LSI finishes available. Consult factory.

### Optical System

- High density LED optical system delivers industry leading optical performance and visual comfort.
- 7 distribution types 3W, 4F, 5Q, 5C, 5R, 5D, AD
- Diffused lens version provides maximum visual comfort with reduced brightness and LED pixelization
- Zero uplight.
- Available in 5000K, 4000K, 3500K, 3000K and 2700K color temperatures per ANSI C78.377.
- Minimum CRI of 80
- External Shield available for field installation (see accessory ordering information and dimensions for details).

### Electrical

- High-performance driver features overvoltage, under-voltage, short-circuit and over temperature protection (6kV surge standard).

- 0-10V dimming (10% - 100%) standard.
- Standard Universal Voltage (120-277 VAC) Input 50/60 Hz or optional High Voltage (347-480 VAC).
- Total harmonic distortion: <20%
- Operating temperature: -40°C to +40°C (-40°F to +104°F).
- Power factor: >.90
- Input power stays constant over life.
- Field replaceable 10kV surge protection device meets a minimum Category C Low operation (per ANSI/IEEE C62.41.2).
- Driver is fully encased in potting material for moisture resistance and complies with FCC standards. Driver and key electronic components can easily be accessed.

### Controls

- Integral passive infrared Bluetooth™ motion and photocell sensor options. Fixtures operate independently and can be commissioned via an iOS or Android configuration app.
- LSI's AirLink™ Blue lighting control system is a simple feature rich wireless Bluetooth mesh network. The integrated fixture sensor module provides wireless control of grouped fixtures based on motion sensors, daylight or a fully customizable schedule. Updates and modifications to the control strategy are easily implemented via an intuitive iOS app.

### Installation

- Designed to mount to square or round poles.
- Utilizes LSI's B2 drill pattern.

### Warranty

- LSI luminaires carry a 5-year limited warranty. Refer to <https://www.lsicorp.com/resources/terms-conditions-warranty/> for more information.

### Listings

- Listed to UL 1598 and UL 8750.
- Meets Buy American Act requirements.
- IDA compliant; with 3000K and warmer color temperature selection.
- Title 24 Compliant; see local ordinance for qualification information.
- Suitable for wet locations.
- IP66 rated Luminaire per IEC 60598-1.
- 3G rated for ANSI C136.31 high vibration applications.
- DesignLights Consortium® (DLC) qualified product. Not all versions of this product may be DLC qualified. Please check the DLC Qualified Products List at [www.designlights.org/QPL](http://www.designlights.org/QPL) to confirm which versions are qualified.



# Opulence Small Side Arm Mount

## ORDERING GUIDE

[Back to Quick Links](#)TYPICAL ORDER EXAMPLE: **OPS SA 8L 4F UNV 40K8 BLK ALBCS1**

Family	Mounting	Lumen Package*	Distribution
OPS - Opulence Small	SA - Side Arm Mount	<b>3L</b> - 3,000 Lumens <b>5L</b> - 5,000 Lumens <b>6L</b> - 6,000 Lumens <b>8L</b> - 8,000 Lumens <b>10L</b> - 10,000 Lumens <b>12L</b> - 12,000 Lumens <b>14L</b> - 14,000 Lumens	<b>5Q</b> - Type 5 Square <b>5C</b> - Type 5 Concentrated <b>5R</b> - Type 5 Rectangular <b>3W</b> - Type 3 (Wide Throw) <b>4F</b> - Type 4 (Forward Throw) <b>5D</b> - Type 5 Diffused <b>AD</b> - Asymmetrical Diffused

Voltage	Color Temp	Finish	Controls	Options
<b>UNV</b> - Universal Voltage (120-277V) <b>HV</b> - High Voltage (347-480V)	<b>50K8</b> - 5,000K CCT - 80 CRI <b>40K8</b> - 4,000K CCT - 80 CRI <b>35K8</b> - 3,500K CCT - 80 CRI <b>30K8</b> - 3,000K CCT - 80 CRI <b>27K8</b> - 2,700K CCT - 80 CRI	<b>BRZ</b> - Dark Bronze <b>BLK</b> - Black <b>GPT</b> - Graphite <b>GMG</b> - Gun Metal Gray <b>MSV</b> - Metallic Silver <b>PLP</b> - Platinum Plus <b>WHT</b> - White	<b>(Blank)</b> - None <b>Wireless Controls System</b> <b>ALBCS1</b> - AirLink Blue Wireless Motion & Photo Sensor Controller (8-24" MH) <b>ALBCS2</b> - AirLink Blue Wireless Motion & Photo Sensor Controller (25-40" MH) <b>Stand-Alone Controls</b> <b>CR7P</b> - 7 Pin Control Receptacle ANSI C136.41 <b>IMSBT1</b> - Integral Bluetooth™ Motion and Photocell Sensor (8-24" MH) <sup>13</sup> <b>IMSBT2</b> - Integral Bluetooth™ Motion and Photocell Sensor (25-40" MH) <sup>13</sup>	<b>(Blank)</b> - None <b>BB</b> - Battery Back-up (0°C) <b>CWBB</b> - Cold Weather Battery Back-up (-20°C)

## Accessory Ordering Information

CONTROLS ACCESSORIES	
Description	Order Number
Twist Lock Photocell (120V) for use with CR7P	122514
Twist Lock Photocell (208-277) for use with CR7P	122515
Twist Lock Photocell (347V) for use with CR7P	122516
Twist Lock Photocell (480V) for use with CR7P	1225180
AirLink 5 Pin Twist Lock Controller	661409
AirLink 7 Pin Twist Lock Controller	661410
Shorting Cap for use with CR7P	149328

FUSING ACCESSORIES <sup>5</sup>	
Description	Order Number
Single Fusing (120V)	FK120
Single Fusing (277V)	FK277
Double Fusing (480V)	DFK480
Double Fusing (347V)	DFK347

### FOOTNOTES:

- 1 - 120-277V Only. Not available with 14L Lumen Package.
- 2 - Control device or shorting cap must be ordered separately. See Accessory Ordering Information.
- 3 - IMSBT is field configurable via the LSI app that can be downloaded from your smartphone's native app store.
- 4 - Accessories are shipped separately and field installed.
- 5 - Fusing must be located in hand hole of pole.
- 6 - "CLR" denotes finish. See Finish options.

MOUNTING ACCESSORIES <sup>6</sup>	
Description	Order Number
Wall Mount Bracket	750441CLR
Square Pole Tenon Adapter	674299CLR
Round Pole Tenon Adapter	BKA 2RNM TN120 CLR
Square Pole Quick Mount Bracket	751534 CLR
15" Square Pole Quick Mount Bracket	740022 CLR
Round Pole Quick Mount Bracket	BKS POMH RD B2 CLR
15" Round Pole Quick Mount Bracket	BKS PO15 RD B2 CLR
Decorative Base Cover (4 / 5" Round Poles)	483859CLR
10' Linear Bird Spike Kit (4' Recommended per Luminaire)	751632
EHS - External Shield (Black Finish Only)	781340





# Opulence Small Side Arm Mount

## PERFORMANCE

[Back to Quick Links](#)

DELIVERED LUMENS (OPS)*																		
Lumen Package	Distribution	CRI	2700K CCT			3000K CCT			3500K CCT			4000K CCT			5000K CCT			Wattage
			Delivered Lumens	Efficacy	BUG Rating	Delivered Lumens	Efficacy	BUG Rating	Delivered Lumens	Efficacy	BUG Rating	Delivered Lumens	Efficacy	BUG Rating	Delivered Lumens	Efficacy	BUG Rating	
3L	5Q	80	3024	149	B1-U0-G1	3122	153	B2-U0-G1	3139	154	B2-U0-G1	3100	152	B2-U0-G1	3228	159	B2-U0-G1	20
	5C		3145	155	B2-U0-G0	3247	160	B2-U0-G0	3265	160	B2-U0-G0	3225	158	B2-U0-G0	3358	165	B2-U0-G0	
	5R		2958	145	B1-U0-G1	3054	150	B2-U0-G2	3071	151	B2-U0-G2	3033	149	B2-U0-G2	3158	156	B2-U0-G2	
	4F		3040	149	B1-U0-G1	3139	154	B1-U0-G1	3157	155	B1-U0-G1	3118	153	B1-U0-G1	3246	159	B1-U0-G1	
	3W		3001	147	B1-U0-G1	3098	152	B1-U0-G1	3116	153	B1-U0-G1	3077	151	B1-U0-G1	3204	157	B1-U0-G1	
	5D		2813	138	B1-U0-G1	2904	143	B1-U0-G1	2920	143	B1-U0-G1	2884	142	B1-U0-G1	3003	148	B1-U0-G1	
	AD		2832	139	B1-U0-G1	2924	144	B1-U0-G1	2940	144	B1-U0-G1	2903	143	B1-U0-G1	3023	149	B1-U0-G1	
5L	5Q	80	4999	147	B2-U0-G1	5161	151	B2-U0-G1	5190	152	B2-U0-G1	5126	150	B2-U0-G1	5337	156	B2-U0-G1	34
	5C		5199	152	B2-U0-G0	5368	157	B2-U0-G0	5398	158	B2-U0-G0	5331	156	B2-U0-G0	5551	163	B2-U0-G0	
	5R		4890	143	B2-U0-G2	5049	148	B2-U0-G2	5077	149	B2-U0-G2	5014	147	B2-U0-G2	5221	153	B2-U0-G2	
	4F		5026	147	B1-U0-G1	5190	152	B1-U0-G1	5218	153	B1-U0-G1	5154	151	B1-U0-G1	5366	157	B1-U0-G1	
	3W		4961	145	B1-U0-G1	5122	150	B1-U0-G1	5151	151	B1-U0-G1	5087	149	B1-U0-G1	5296	155	B1-U0-G1	
	5D		4650	136	B2-U0-G1	4801	141	B2-U0-G1	4828	142	B2-U0-G1	4768	140	B2-U0-G1	4965	146	B2-U0-G1	
	AD		4681	137	B1-U0-G1	4833	142	B1-U0-G1	4860	142	B1-U0-G1	4800	141	B1-U0-G1	4998	147	B1-U0-G1	
6L	5Q	80	6058	147	B2-U0-G1	6254	151	B2-U0-G1	6289	152	B2-U0-G1	6211	150	B2-U0-G1	6467	156	B2-U0-G1	41
	5C		6300	152	B2-U0-G0	6505	157	B2-U0-G0	6541	158	B2-U0-G0	6460	156	B2-U0-G0	6726	163	B2-U0-G0	
	5R		5926	143	B2-U0-G2	6118	148	B3-U0-G3	6152	149	B3-U0-G3	6076	147	B3-U0-G3	6326	153	B3-U0-G3	
	4F		6091	147	B2-U0-G1	6289	152	B2-U0-G1	6324	153	B2-U0-G1	6245	151	B2-U0-G1	6503	157	B2-U0-G1	
	3W		6012	145	B2-U0-G1	6207	150	B2-U0-G2	6241	151	B2-U0-G2	6164	149	B2-U0-G2	6418	155	B2-U0-G2	
	5D		5635	136	B2-U0-G1	5818	141	B2-U0-G1	5850	142	B2-U0-G1	5778	140	B2-U0-G1	6016	146	B2-U0-G1	
	AD		5673	137	B2-U0-G1	5857	142	B2-U0-G1	5889	142	B2-U0-G1	5817	141	B2-U0-G1	6056	147	B2-U0-G1	
8L	5Q	80	7938	145	B3-U0-G1	8196	149	B3-U0-G1	8241	150	B3-U0-G1	8139	148	B3-U0-G1	8475	154	B3-U0-G1	55
	5C		8256	150	B3-U0-G1	8524	155	B3-U0-G1	8571	156	B3-U0-G1	8465	154	B3-U0-G1	8814	161	B3-U0-G1	
	5R		7765	141	B3-U0-G3	8017	146	B3-U0-G3	8062	147	B3-U0-G3	7962	145	B3-U0-G3	8290	151	B3-U0-G3	
	4F		7982	145	B2-U0-G1	8241	150	B2-U0-G1	8287	151	B2-U0-G1	8184	149	B2-U0-G1	8521	155	B2-U0-G1	
	3W		7878	143	B2-U0-G2	8134	148	B2-U0-G2	8179	149	B2-U0-G2	8078	147	B2-U0-G2	8411	153	B2-U0-G2	
	5D		7384	134	B2-U0-G1	7624	139	B2-U0-G1	7666	140	B2-U0-G1	7571	138	B2-U0-G1	7883	144	B2-U0-G1	
	AD		7434	135	B2-U0-G2	7675	140	B2-U0-G2	7717	141	B2-U0-G2	7622	139	B2-U0-G2	7936	145	B2-U0-G2	
10L	5Q	80	9969	142	B3-U0-G1	10292	146	B3-U0-G1	10350	147	B3-U0-G1	10222	145	B3-U0-G1	10643	151	B3-U0-G1	70
	5C		10368	147	B3-U0-G1	10705	152	B3-U0-G1	10764	153	B3-U0-G1	10631	151	B3-U0-G1	11069	157	B3-U0-G1	
	5R		9752	138	B3-U0-G3	10068	143	B3-U0-G3	10124	144	B3-U0-G3	9999	142	B3-U0-G3	10411	148	B3-U0-G3	
	4F		10024	142	B2-U0-G2	10349	147	B2-U0-G2	10407	148	B2-U0-G2	10278	146	B2-U0-G2	10701	152	B2-U0-G2	
	3W		9893	140	B2-U0-G2	10214	145	B2-U0-G2	10271	146	B2-U0-G2	10144	144	B2-U0-G2	10562	150	B2-U0-G2	
	5D		9273	132	B3-U0-G1	9574	136	B3-U0-G1	9628	137	B3-U0-G1	9508	135	B3-U0-G1	9900	141	B3-U0-G1	
	AD		9335	133	B2-U0-G2	9638	137	B2-U0-G2	9692	138	B2-U0-G2	9572	136	B2-U0-G2	9967	142	B2-U0-G2	
12L	5Q	80	11935	140	B3-U0-G2	12322	144	B3-U0-G2	12391	145	B3-U0-G2	12237	143	B3-U0-G2	12742	149	B3-U0-G2	85
	5C		12413	145	B3-U0-G1	12816	150	B3-U0-G1	12887	151	B3-U0-G1	12728	149	B3-U0-G1	13252	155	B3-U0-G1	
	5R		11675	137	B3-U0-G3	12054	141	B3-U0-G3	12121	142	B3-U0-G3	11971	140	B3-U0-G3	12464	146	B3-U0-G3	
	4F		12001	140	B2-U0-G2	12390	145	B2-U0-G2	12459	146	B2-U0-G2	12305	144	B2-U0-G2	12812	150	B2-U0-G2	
	3W		11845	139	B2-U0-G2	12229	143	B2-U0-G2	12297	144	B2-U0-G2	12145	142	B2-U0-G2	12645	148	B3-U0-G3	
	5D		11102	130	B3-U0-G2	11463	134	B3-U0-G2	11526	135	B3-U0-G2	11384	133	B3-U0-G2	11853	139	B3-U0-G2	
	AD		11176	131	B3-U0-G2	11539	135	B3-U0-G2	11603	136	B3-U0-G2	11460	134	B3-U0-G2	11932	140	B3-U0-G2	
14L	5Q	80	13798	138	B3-U0-G2	14246	142	B3-U0-G2	14325	143	B3-U0-G2	14148	141	B3-U0-G2	14731	147	B3-U0-G2	100
	5C		14351	142	B3-U0-G1	14817	147	B3-U0-G1	14899	148	B3-U0-G1	14715	146	B3-U0-G1	15321	152	B3-U0-G1	
	5R		13498	135	B3-U0-G3	13936	139	B3-U0-G3	14013	140	B3-U0-G3	13840	138	B3-U0-G3	14410	144	B3-U0-G3	
	4F		13874	138	B2-U0-G2	14324	143	B2-U0-G2	14404	144	B2-U0-G2	14226	142	B2-U0-G2	14812	148	B3-U0-G2	
	3W		13694	137	B3-U0-G3	14138	141	B3-U0-G3	14217	142	B3-U0-G3	14041	140	B3-U0-G3	14620	146	B3-U0-G3	
	5D		12836	128	B3-U0-G2	13252	132	B3-U0-G2	13326	133	B3-U0-G2	13161	131	B3-U0-G2	13703	136	B3-U0-G2	
	AD		12921	129	B3-U0-G2	13341	133	B3-U0-G2	13415	134	B3-U0-G2	13249	132	B3-U0-G2	13795	137	B3-U0-G3	



# Opulence Small Side Arm Mount

[Back to Quick Links](#)

## PERFORMANCE

ELECTRICAL DATA*							
Lumens	Wattage	120V	208V	240V	277V	347	480V
3L	20	0.17	0.10	0.08	0.07	0.06	0.04
5L	34	0.29	0.16	0.14	0.12	0.10	0.07
6L	41	0.35	0.20	0.17	0.15	0.12	0.09
8L	55	0.46	0.26	0.23	0.20	0.16	0.11
10L	70	0.59	0.34	0.29	0.25	0.20	0.15
12L	85	0.84	0.48	0.42	0.36	0.29	0.21
14L	100	0.84	0.48	0.42	0.36	0.29	0.21

\*Electrical data at 25C (77F). Actual wattage may differ by +/-10%.

RECOMMENDED LUMEN MAINTENANCE†					
Ambient Temp	Lumen Multiplier				
	0 hrs. <sup>2</sup>	25K hrs. <sup>2</sup>	50K hrs. <sup>2</sup>	75K hrs. <sup>3</sup>	100K hrs. <sup>3</sup>
0 C - 40 C	100%	99%	96%	93%	90%

- Lumen maintenance values are calculated per TM-21 based on LM-80 data and in-situ luminaire testing.
- In accordance with IESNA TM-21-11, Projected Values represent interpolated value based on time durations that are within six times (6X) the IESNA LM-80-08 total test duration (in hours) for the device under testing ((DUT) i.e. the packaged LED chip).
- In accordance with IESNA TM-21-11, Calculated Values represent time durations that exceed six times NA LM-80-08 total test duration (in hours) for the device under testing ((DUT) i.e. the packaged LED chip).

## PHOTOMETRICS

[Back to Quick Links](#)

Luminaire photometry has been conducted by an accredited laboratory in accordance with IESNA LM-79. As specified by IESNA LM-79 the entire luminaire is tested as the source resulting in a luminaire efficiency of 100%.

### OPS-SA-14L-3W-40K8

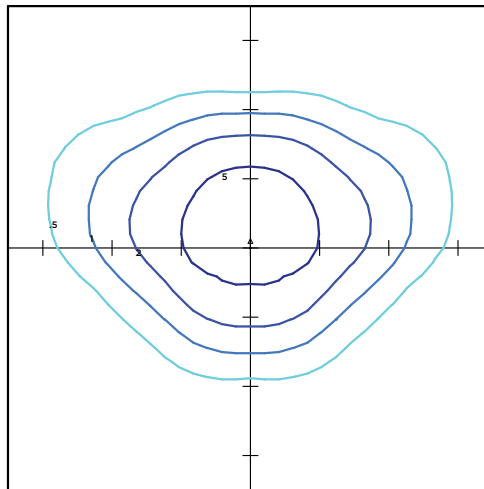
#### LUMINAIRE DATA

Type 2 Distribution	
Description	4000 Kelvin, 80 CRI
Delivered Lumens	13,556
Watts	100
Efficacy	136
IES Type	Type III - Very Short
BUG Rating	B3-U0-G3

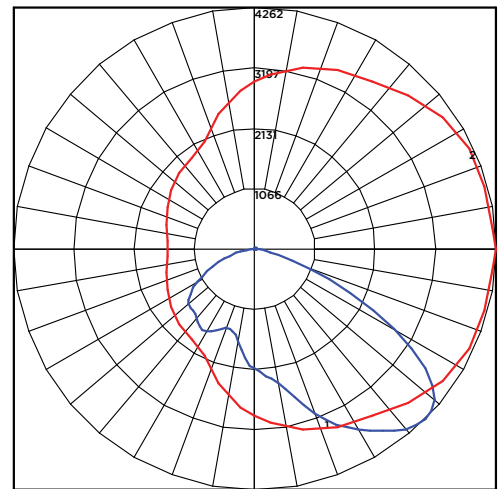
#### Zonal Lumen Summary

Zone	Lumens	%Luminaire
Low (0-30°)	2591	19%
Medium (30-60°)	7118	53%
High (60-80°)	3624	27%
Very High (80-90°)	223	2%
Uplight (90-180°)	0	0%
Total Flux	13556	100%

#### ISO FOOTCANDLE



#### POLAR CURVE



#### 15' Mounting Height/15' Grid Spacing

■ 5 FC ■ 2 FC ■ 1 FC ■ 0.5 FC



# Opulence Small Side Arm Mount

[Back to Quick Links](#)

## PHOTOMETRICS

### OPS-SA-14L-4F-40K8

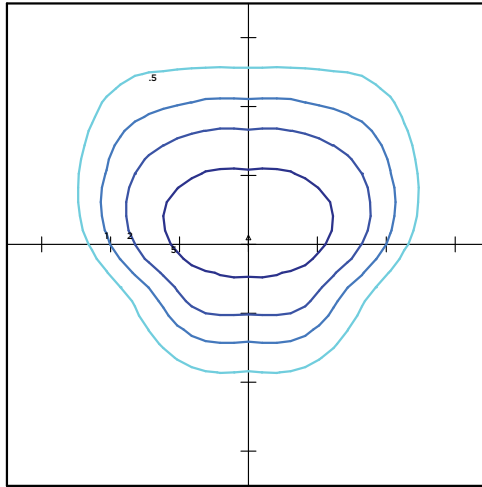
#### LUMINAIRE DATA

Type 4 Distribution	
Description	4000 Kelvin, 80 CRI
Delivered Lumens	13,754
Watts	100
Efficacy	138
IES Type	Type IV - Very Short
BUG Rating	B2-U0-G2

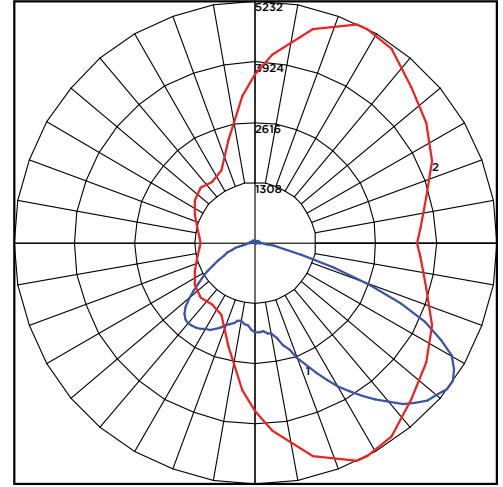
#### Zonal Lumen Summary

Zone	Lumens	%Luminaire
Low (0-30°)	2437	18%
Medium (30-60°)	7722	56%
High (60-80°)	3440	25%
Very High (80-90°)	155	1%
Uplight (90-180°)	0	0%
Total Flux	13754	100%

#### ISO FOOTCANDLE



#### POLAR CURVE



15' Mounting Height/15' Grid Spacing

5 FC
  2 FC
  1 FC
  0.5 FC

### OPS-SA-14L-5Q-40K8

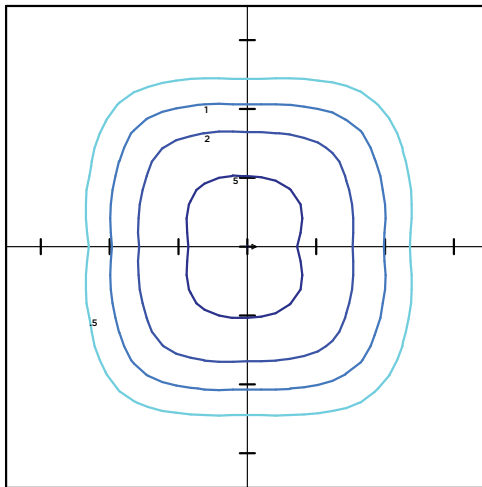
#### LUMINAIRE DATA

Type 5 Square Distribution	
Description	4000 Kelvin, 80 CRI
Delivered Lumens	14,148
Watts	100
Efficacy	141
IES Type	Type VS - Short
BUG Rating	B3-U0-G2

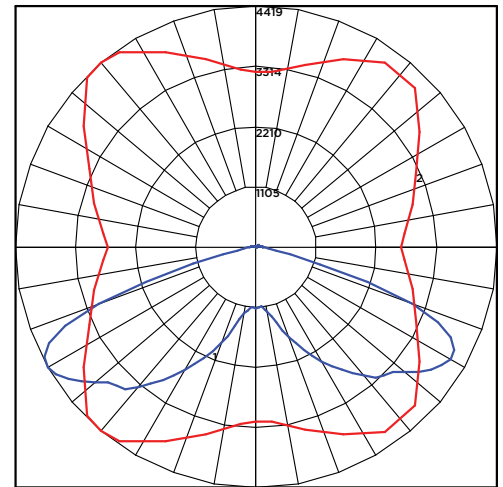
#### Zonal Lumen Summary

Zone	Lumens	%Luminaire
Low (0-30°)	1724	12%
Medium (30-60°)	7679	54%
High (60-80°)	4643	33%
Very High (80-90°)	102	1%
Uplight (90-180°)	0	0%
Total Flux	14148	100%

#### ISO FOOTCANDLE



#### POLAR CURVE



15' Mounting Height/15' Grid Spacing

5 FC
  2 FC
  1 FC
  0.5 FC



# Opulence Small Side Arm Mount

[Back to Quick Links](#)

## PHOTOMETRICS

### OPS-SA-14L-5D-40K8

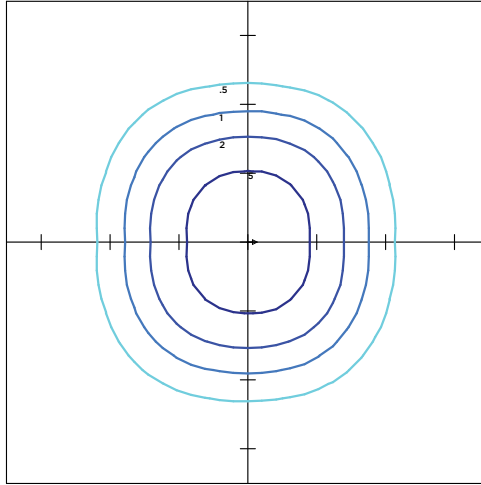
#### LUMINAIRE DATA

Type 5 Diffuse Distribution	
Description	4000 Kelvin, 80 CRI
Delivered Lumens	13,161
Watts	100
Efficacy	132
IES Type	Type VS - Very Short
BUG Rating	B3-U0-G2

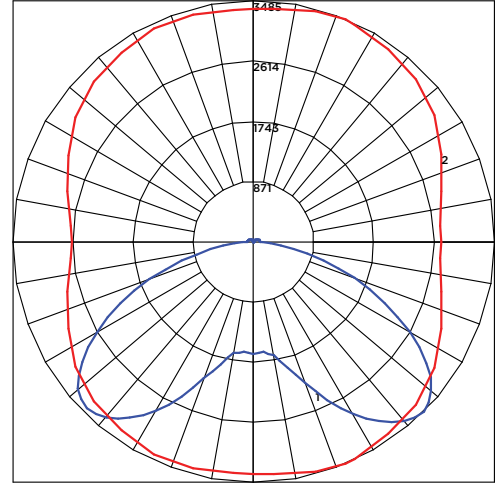
#### Zonal Lumen Summary

Zone	Lumens	%Luminaire
Low (0-30)°	2331	18%
Medium (30-60)°	7471	57%
High (60-80)°	3109	24%
Very High (80-90)°	251	2%
Uplight (90-180)°	0	0%
Total Flux	13161	100%

#### ISO FOOTCANDLE



#### POLAR CURVE



#### 15' Mounting Height/15' Grid Spacing

5 FC
  2 FC
  1 FC
  0.5 FC

### OPS-SA-14L-5R-40K8

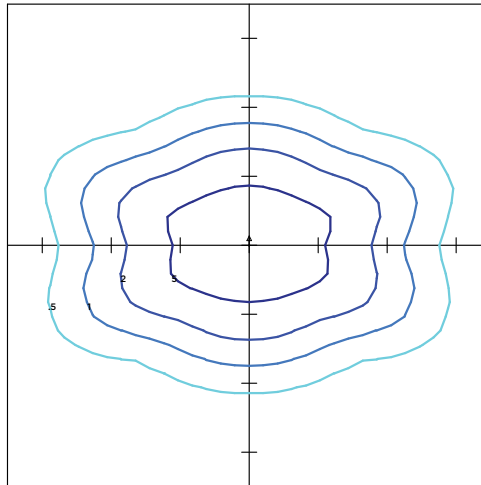
#### LUMINAIRE DATA

Type 5 Rectangular Distribution	
Description	4000 Kelvin, 80 CRI
Delivered Lumens	13,841
Watts	100
Efficacy	138
IES Type	Type II - Short
BUG Rating	B3-U0-G3

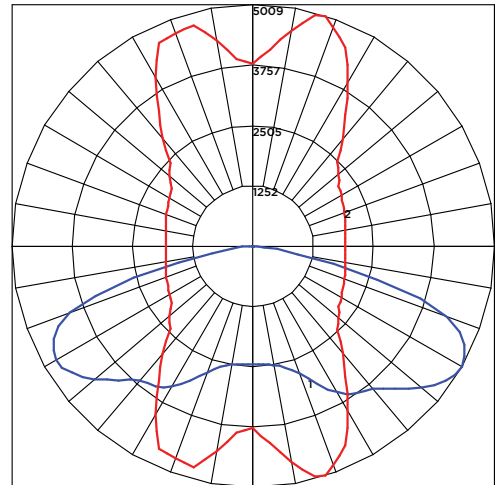
#### Zonal Lumen Summary

Zone	Lumens	%Luminaire
Low (0-30)°	2318	17%
Medium (30-60)°	7223	52%
High (60-80)°	4101	30%
Very High (80-90)°	199	1%
Uplight (90-180)°	0	0%
Total Flux	13841	100%

#### ISO FOOTCANDLE



#### POLAR CURVE



#### 15' Mounting Height/15' Grid Spacing

5 FC
  2 FC
  1 FC
  0.5 FC



# Opulence Small Side Arm Mount

## PHOTOMETRICS

[Back to Quick Links](#)

### OPS-SA-14L-5C-40K8

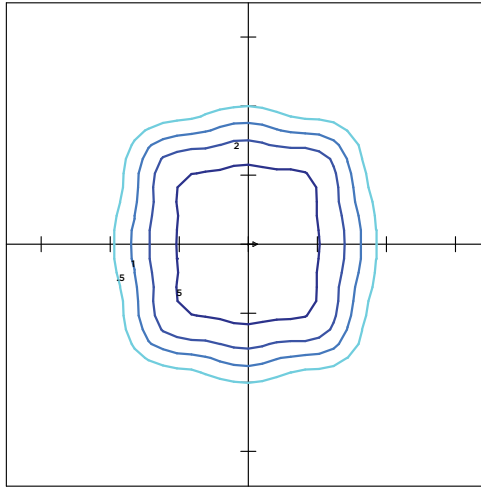
#### LUMINAIRE DATA

Type 5 Concentrated Distribution	
Description	4000 Kelvin, 80 CRI
Delivered Lumens	14715•B104
Watts	100
Efficacy	147
IES Type	Type VS - Very Short
BUG Rating	B3-U0-G1

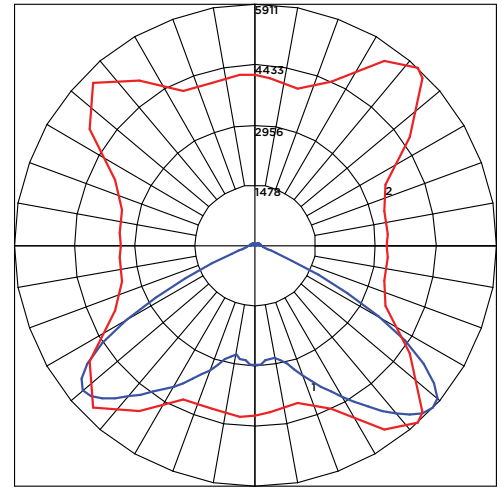
#### Zonal Lumen Summary

Zone	Lumens	%Luminaire
Low (0-30)°	3596	9%
Medium (30-60)°	9723	43%
High (60-80)°	1355	48%
Very High (80-90)°	41	1%
Uplight (90-180)°	0	0%
Total Flux	14715	100%

#### ISO FOOTCANDLE



#### POLAR CURVE



#### 15' Mounting Height/15' Grid Spacing

5 FC
  2 FC
  1 FC
  0.5 FC

### OPS-SA-14L-AD-40K8

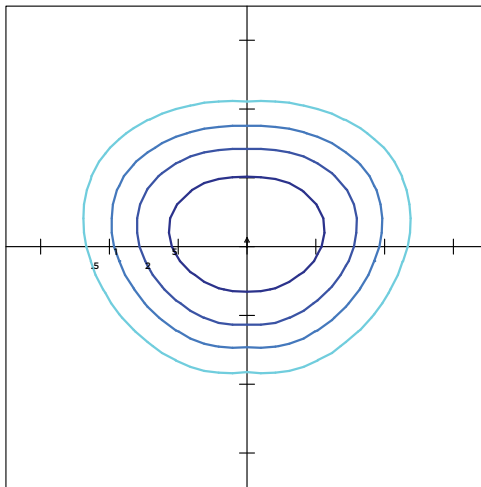
#### LUMINAIRE DATA

Type Asymmetric Diffused Distribution	
Description	4000 Kelvin, 80 CRI
Delivered Lumens	13,249
Watts	100
Efficacy	132
IES Type	Type II - Very Short
BUG Rating	B3-U0-G2

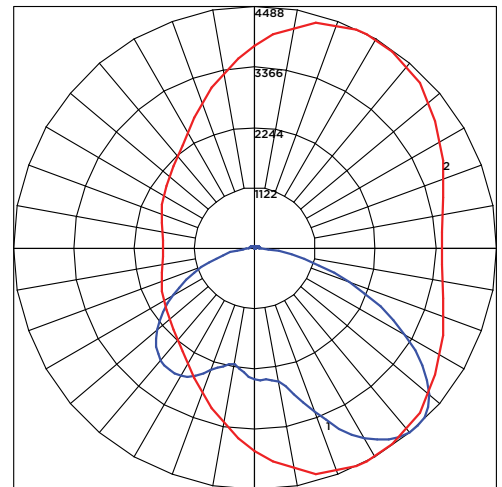
#### Zonal Lumen Summary

Zone	Lumens	%Luminaire
Low (0-30)°	3078	9%
Medium (30-60)°	7361	43%
High (60-80)°	2605	48%
Very High (80-90)°	207	1%
Uplight (90-180)°	0	0%
Total Flux	13249	100%

#### ISO FOOTCANDLE



#### POLAR CURVE



#### 15' Mounting Height/15' Grid Spacing

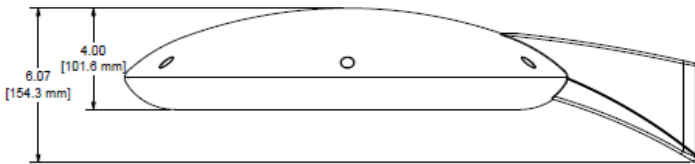
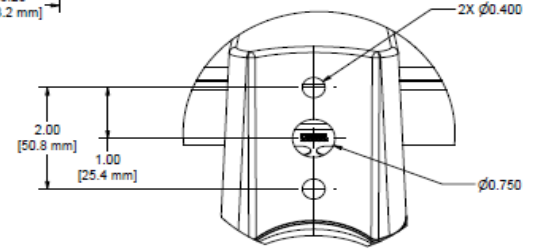
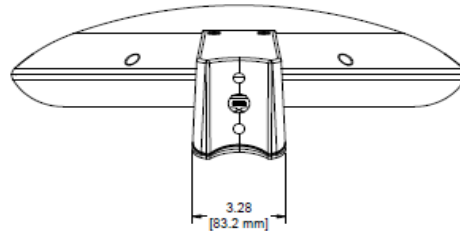
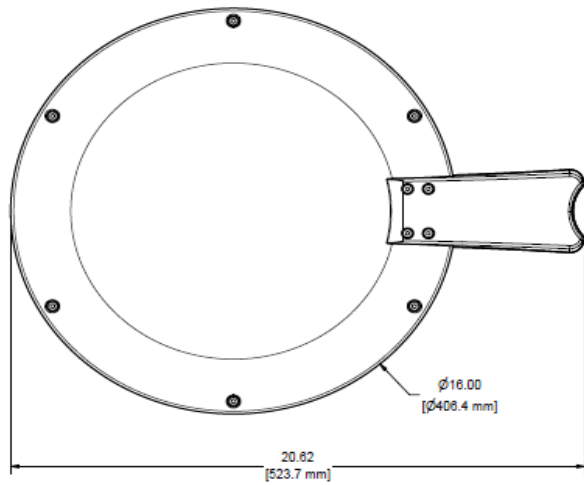
5 FC
  2 FC
  1 FC
  0.5 FC



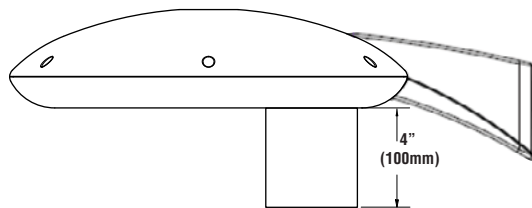
# Opulence Small Side Arm Mount

## PRODUCT DIMENSIONS

[Back to Quick Links](#)



External Shield



LUMINAIRE EPA CHART - OPS SA					
Tilt Degree			Tilt Degree		
0°			0°		
	Single	0.6		T90°	1.8
	D180°	1.1		TN120°	1.8
	D90°	1.2		O60°	1.8





# Opulence Small Side Arm Mount

## CONTROLS

### Integral Bluetooth™ Motion and Photocell Sensor (IMSBT)

Slim low profile sensor provides multi-level control based on motion and/or daylight. Sensor controls 0-10 VDC LED drivers and is rated for cold and wet locations (-30° C to 70° C). Two unique PIR lenses are available and used based on fixture mounting height. All control parameters are adjustable via an iOS or Android App capable of storing and transmitting sensor profiles.

[Click here to learn more about IMSBT.](#)

### AirLink Blue

Wireless Bluetooth Mesh Outdoor Lighting Control System that provides energy savings, code compliance and enhanced safety/security for parking lots and parking garages. Three key components; Bluetooth wireless radio/sensor controller, Time Keeper and an iOS App. Capable of grouping multiple fixtures and sensors as well as scheduling time-based events by zone. Radio/Sensor Controller is factory integrated into Area/Site, Wall Mounted, Parking Garage and Canopy luminaires.

[Click here to learn more about AirLink Blue.](#)

## POLES & BRACKETS

LSI offers a full line of poles and mounting accessories to complete your lighting assembly. Aluminum and steel in both square and round shafts. In addition, LSI offers round tapered, fluted and hinge based poles. Designed and engineered for durability and protected with our oven baked DuraGrip Protection System. Also available with our DuraGrip+ Protection system for unmatched corrosion resistance and an extended warranty. American made in our Ohio facility with industry leading lead times.

[Click here to learn more details about poles & brackets.](#)



#### SPUN ALUMINUM COLLAR Round Straight

Optional one-piece spun aluminum collar for 4" or 5" diameter straight round poles. Features durable, high quality construction with aesthetically pleasing design that slips over the pole for increased theft deterrent.



#### BKS PQM15 CLR

The Pole Quick Mount Bracket allows for preset 15° uptilt of LSI luminaires for greater throw of light and increased vertical illumination as well as fast installation onto poles with LSI's B2, B3 or B5 bolt pattern.



#### CONTEMPORARY BASE COVER & TAPERED POLE

Optional contemporary base cover is cast from 356 alloy aluminum and provided with an access door. Available with 10 - 18' round taper pole shafts. The complete assembly is heat-treated to a T6 temper.



#### BKS PQMH CLR

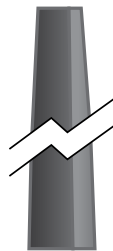
The Pole Quick Mount Bracket allows for lightning fast installation of LSI luminaires onto existing and new construction poles with LSI's B2, B3 or B5 standard pole bolt patterns.



Square Pole  
14'-30'



Round Pole  
10'-30'



Tapered Pole  
10'-30'



#### DECORATIVE BASE COVER Round Straight

Optional decorative base cover has a two-piece die cast construction with stainless steel fasteners. Base cover is polyester powder coated to match pole. GBC base cover fits 4" and 5" diameter straight round poles. Includes 4" round pole adaptor molded from black silicone rubber.